



Certificate of Analysis

QA SAMPLE - INFORMATIONAL ONLY

1 of 3

ICAL ID: 20211026-041
Sample: CA211026-002-003
Dragonfruit Coconut Dome Gummy
Strain: Dragonfruit Coconut Dome Gummy
Category: Ingestible

Lic. #
SAN DIEGO, CA 92126
Lic. #

Batch#:
Primary Size:
Batch Size:
Collected: 10/27/2021; Received: 10/27/2021
Completed: 10/27/2021

Moisture NT Water Activity NT	Δ 9-THC 100.91 mg/unit 10.09 mg/serving	CBD 0.25 mg/unit 0.03 mg/serving	Total Cannabinoids 107.80 mg/unit 10.78 mg/serving	Total Terpenes NT
----------------------------------------	-------------------------------------------------------------	-----------------------------------------------	-----------------------------------------------------------------	----------------------

Summary	SOP Used	Date Tested	Complete
Batch	POT-PREP-002	10/26/2021	Complete



Cannabinoid Profile

1 Unit = package, 41.78 g. 10 serving(s) per package.

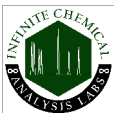
Analyte	LOQ	LOD	%	mg/g	mg/unit	Analyte	LOQ	LOD	%	mg/g	mg/unit
THCa	0.53	0.18	ND	ND	ND	CBDV	0.19	0.02	ND	ND	ND
Δ 9-THC	0.19	0.04	0.242	2.42	100.91	CBN	0.19	0.02	0.003	0.03	1.34
Δ 8-THC	0.19	0.06	0.002	0.02	0.67	CBGa	0.19	0.06	ND	ND	ND
THCV	0.19	0.03	0.001	0.01	0.33	CBG	0.19	0.02	0.008	0.08	3.51
CBDa	0.20	0.07	ND	ND	ND	CBC	0.32	0.10	0.002	0.02	0.79
CBD	0.19	0.03	0.001	0.01	0.25	Total			0.258	2.58	107.80

Units for THC in banner represent units for LOQ and LOD for all analytes. Total THC=THCa * 0.877 + d9-THC; Total CBD = CBDa * 0.877 + CBD. NR= Not Reported, ND= Not Detected. Potency is reported on a dry weight basis. Instrumentation and analysis SOPs used: Cannabinoids:UHPLC-DAD(POT-INST-005),Moisture:Moisture Analyzer(MOISTURE-001),Water Activity:Water Activity Meter(WA-INST-002), Foreign Material:Microscope(FOREIGN-001). Density measured at 19-24 °C, Water Activity measured at 0-90% RH. All QA submitted by the client, All CA State Compliance sampled using SAMPL-SOP-001.

Terpene Profile

Analyte	LOQ	LOD	%	mg/g	Analyte	LOQ	LOD	%	mg/g
---------	-----	-----	---	------	---------	-----	-----	---	------

NR= Not Reported (no analysis was performed), ND= Not Detected (the concentration is less than the Limit of Detection (LOD)). Analytical instrumentation used: HS-GC-MS; samples analyzed according to SOP TERP-INST-003.



Infinite Chemical Analysis Labs
8380 Miramar Mall #102
San Diego, CA
(858) 623-2740
www.infiniteCAL.com
Lic# C8-0000019-LIC

Josh M Swider

Josh Swider
Lab Director, Managing Partner
10/27/2021

Confident Cannabis
All Rights Reserved
support@confidentcannabis.com
(866) 506-5866
www.confidentcannabis.com



This product has been tested by Infinite Chemical Analysis, LLC using valid testing methodologies and a quality system as required by state law. All LQC samples were performed and met the prescribed acceptance criteria in 16 CCR section 5730, pursuant to 16 CCR section 5726(e)(13). Values reported relate only to the product tested. Infinite Chemical Analysis, LLC makes no claims as to the efficacy, safety or other risks associated with any detected or non-detected levels of any compounds reported herein. This Certificate shall not be reproduced except in full, without the written approval of Infinite Chemical Analysis, LLC.